

ТУРЦИЯ

СЕТЬ ОТЕЛЕЙ ROBINSON:

- ✓ **ROBINSON CAMUYVA 5***
- ✓ **ROBINSON NOBILIS 5***
- ✓ **ROBINSON SARIGERME PARK 4***

О нас



Группа компаний «Spectrum» – это один из старейших туроператоров на российском туристическом рынке, основанный в 1993 году, в состав которой входят две компании «Спектрум-Трэвел» и «Авиа сервис групп»

Туроператор «Spectrum» является одним из ведущих игроков на российском туристическом рынке и предлагает множество различных туристических программ, туров, эксклюзивных маршрутов с вылетами из Москвы и других регионов в более чем 40 стран мира на charterных и регулярных рейсах.

О нас



Ключевые направления компании: *Вьетнам, Индонезия, Китай, Таиланд, Филиппины; Египет, Турция, ОАЭ, Оман, Бахрейн, Доминикана, Куба; Мальдивы, Сейшелы, Шри-Ланка; Италия*

Компания «Спектрум» является действительным членом таких организаций, как IATA, ТКП, АТОР, «Турпомощь», PATA (Pacific Asia Travel Association), FIYTO (Federation of International Youth Travel Organisations), ALTO (Association of Language Travel Organisations), GWEA (Global Work Experience Association), JATA

Номер в реестре туроператоров: **РТО 025484**

Перелет PREMIUM CLASS



Вылет: аэропорт Внуково
Бизнес зал: Prokofiev Lounge

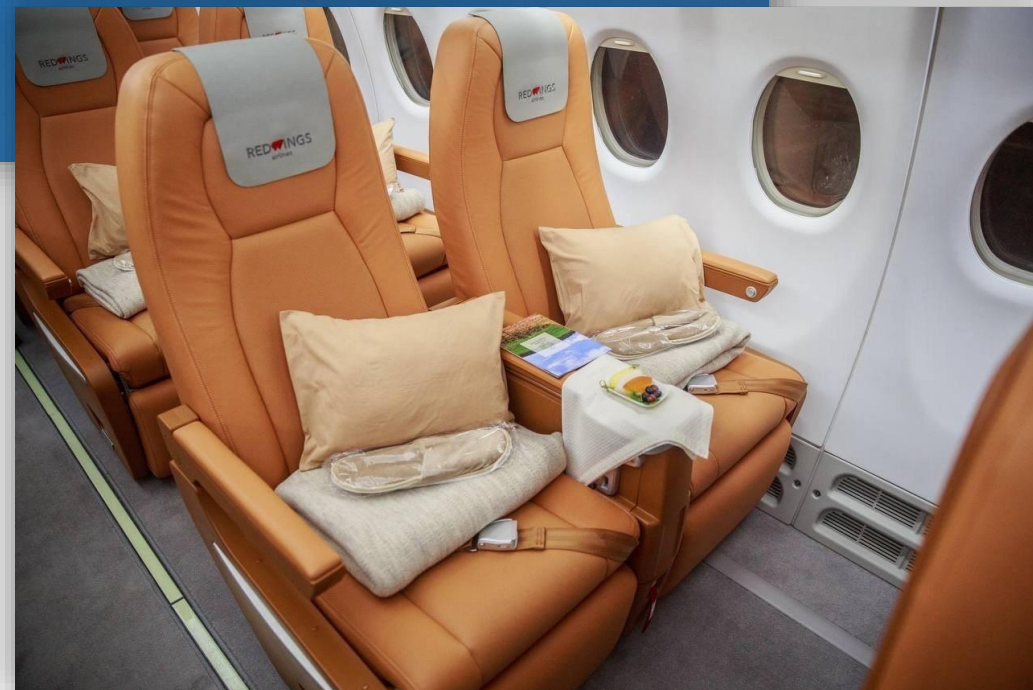
Питание: уровень бизнес-класса
Широкий выбор алкоголя

Дорожный набор
Детский набор

С 18.05.2024 по 12.10.2024
Вылет: среда/суббота

Багаж на человека: 25 кг

www.spectrum.ru



Собственные блоки мест



ТУРЦИЯ. АНТАЛИЯ:

Вылет из Москвы,
Минеральных Вод,
Сочи, Новосибирска

ТАИЛАНД. ПХУКЕТ:

Вылет из Москвы,
Екатеринбурга,
Новосибирска

ЕГИПЕТ. ХУРГАДА, ШАРМ-ЭЛЬ-ШЕЙХ:

Вылет из Москвы, Казани,
Екатеринбурга

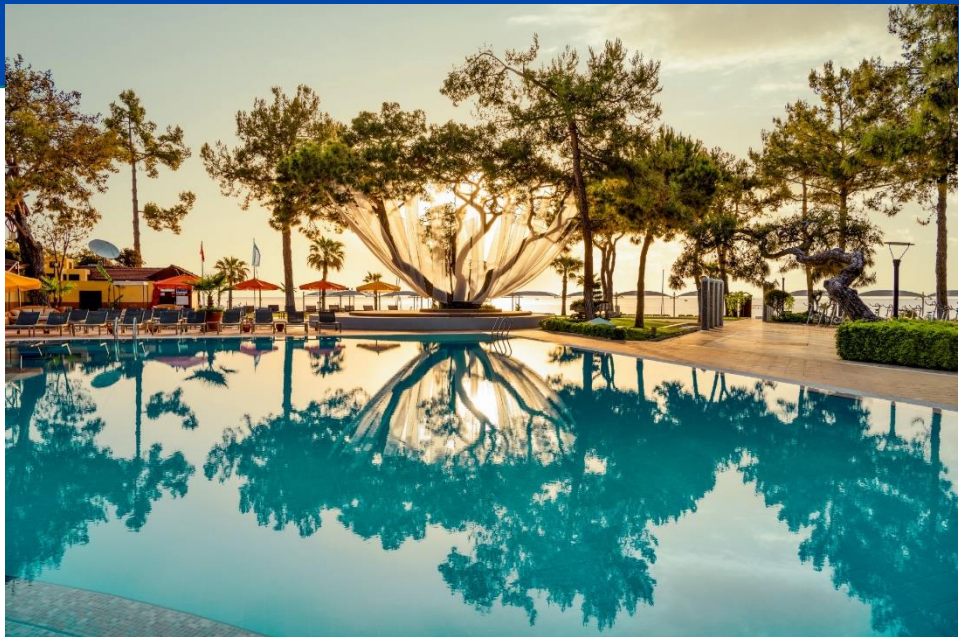
КУБА. ГАВАНА:

Вылет из Москвы















Enjoy your holiday with Adults Only

YOUR RESORT AT A GLANCE



FOR
ADULTS
ONLY

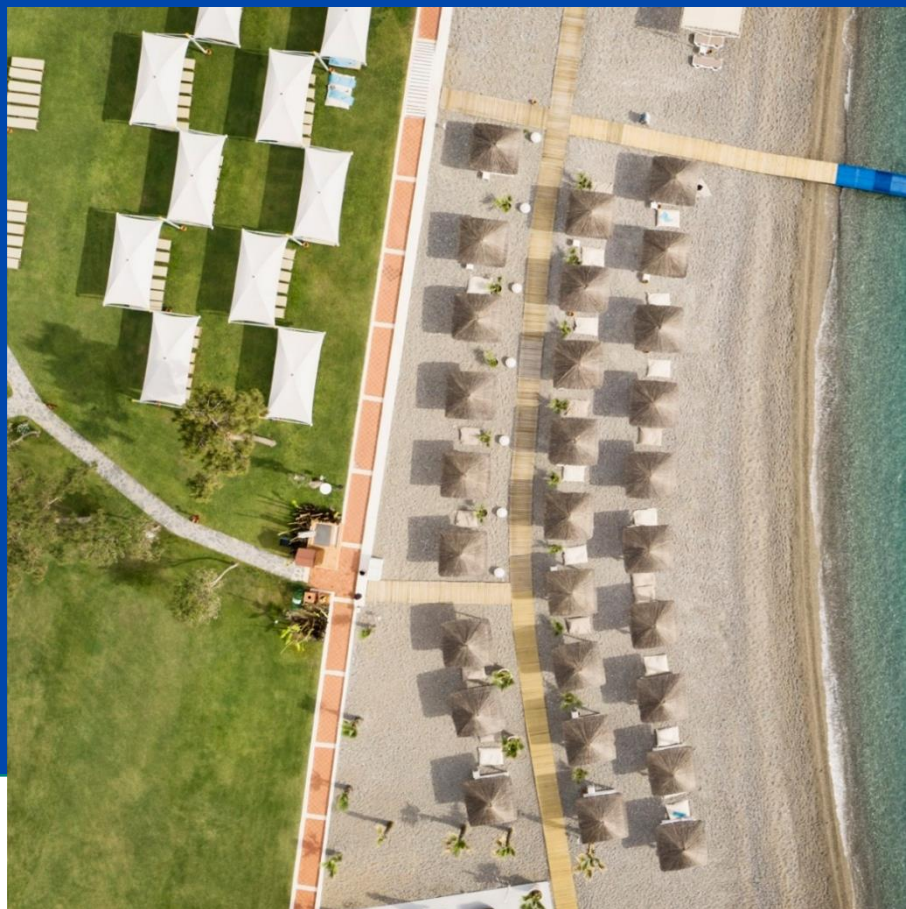
| | | | |
|---|---|---|---|
| Kemer - Türkiye |  |  | Located on a large bay surrounded by untouched forested mountains covered with dense pine trees. |
| Couples. Singles . Sports and Entertainment |  |  | Direct beach front with pebble beach (240m) |
| Open during the summer season |  |  | 5 star holiday village |
| 362 rooms |  |  | 3 restaurants , 4 bars |
| 100.000 m ² |  |  | 1 Outdoor swimming pool (fresh water) |
| Distance to Antalya Airport , 65 km. |  |  | Souvenir shop, boutique, jewelry shop, hairdresser, mini market , WIFI in public areas and rooms included |

YOUR WARM WELCOME





240 m
pebble
beach



crystal
clear
blue sea





Large natural green area





Sun beds in a large area

Accommodation:
362 Village Rooms spread
over 2 floors and 4
categories on the entire
area



Your perfect morning

ROOMS



Single Room Classic , 23m²

Balcony or terrace (patio), with sitting facility

1 bedroom and 1 bathroom

Single bed (2.00 m x 1.00 m)

Occupancy: min. 1 ADL, max. 1 ADL



Double Room Classic, 29m²

Balcony or terrace (patio), with sitting facility

1 bedroom and 1 bathroom

Double bed (two single beds pushed together)

Occupancy: min. 1 ADL, max. 2 ADL



Triple Room Classic, 31m²

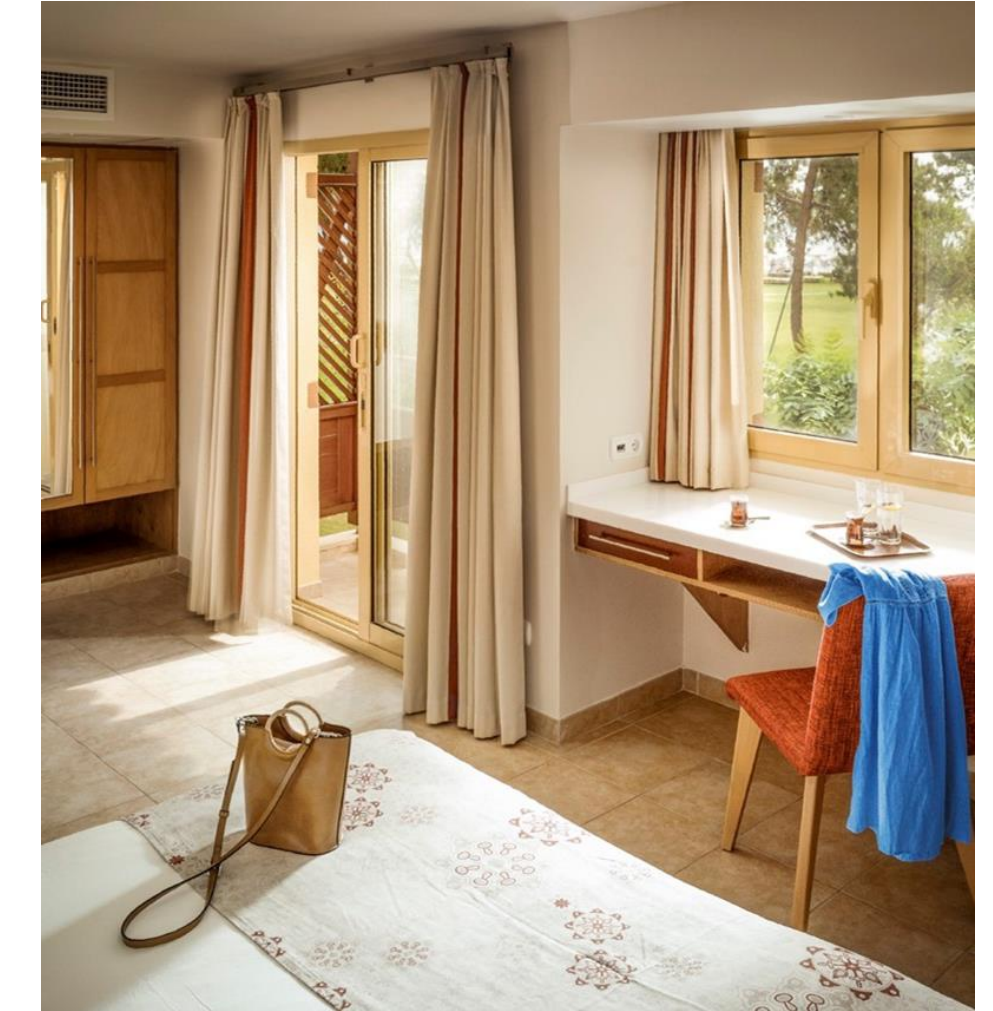
Balcony with sitting facility (only on second floor)

bedroom and 1 bathroom

Double bed (two single beds pushed together)

Sofa bed (1.90 m x 0.90 m)

Occupancy: min. 2 ADL, max. 3 ADL



Apartment Classic, 31m²

Balcony or terrace (patio), with sitting facility

2 bedroom and 1 bathroom

first room with double bed (two single beds pushed together),

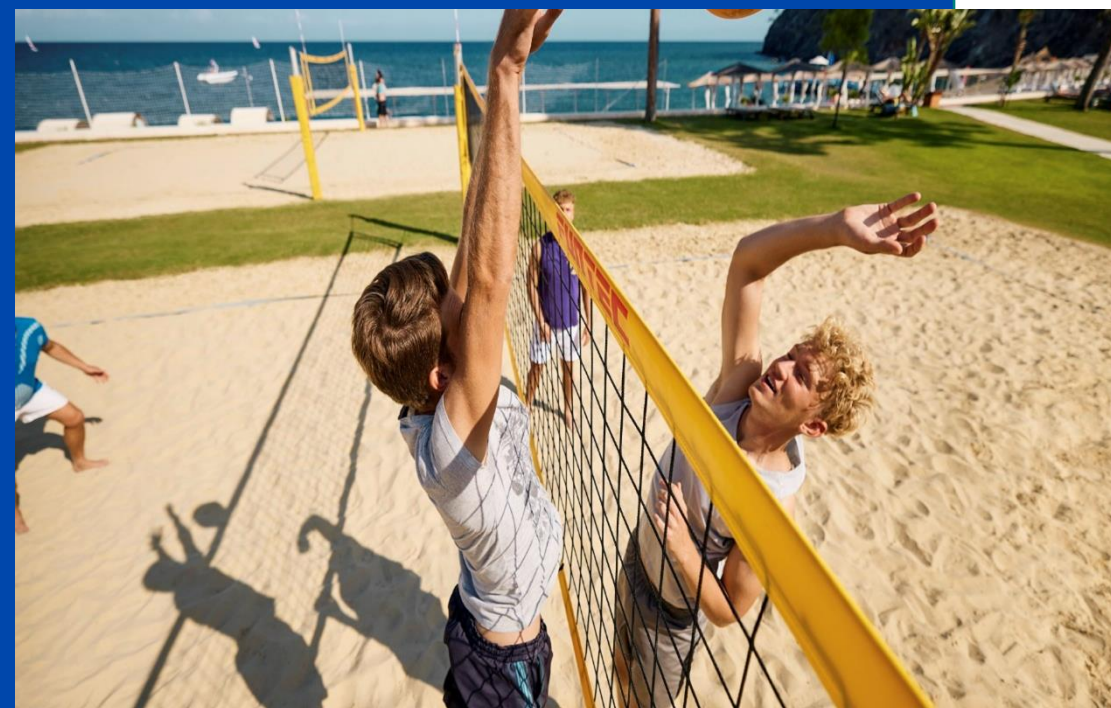
second room with single bed or Sofa bed

Occupancy: min. 2 ADL, max. 3 ADL



FITNESS AND SPORT PROGRAMMES

- Ball sports, Beach volleyball, basketball, soccer and soccer tennis, Water sports, WellFit, Outdoor activities, Biking, Yacht trips, off-road tours, hikes, Rafting and canyoneering (subject with additional charge).
- Do you need a suitable match partner at your level? There are always plenty of suitable candidates to be found on our well-maintained courts. 12 tennis courts (quartz sand), 5 of which are floodlit
- Catamaran Sailing and Stand Up Paddling
- Ideal for beginners and advanced archers
Archery range up to 40 m
- Pilates, Yoga, Fitness studio, Indoor cycling, Personal Training, Power plate studio, Aqua cycling





Tennis







Stand - up Paddling





Water sports





BODY & MIND



Uncover the power within, relax — Do what is good for you and be aware of your own strength and flexibility. Take time for yourself and let your thoughts run free.

- Pilates
- Yoga
- Relax&Dream







WellFIT SPA

WellFit Spa with a total size of approx. 210 m²

- Finnish sauna
- Steam bath
- Relaxation area with lawn for lounging and relaxation room
- Hamam
- Massage and beauty rooms





YOUR MOMENT OF INDULGENCE

- 3 Restaurant
Main, Beach and Local speciality restaurant
- 4 Bar
Main bar, Beachbar, Tennis bar ve NIGHT CLUB
- All inclusive made by ROBINSON
- Varied buffets, international cuisine
- Late breakfast
- BalAyur (Bal = Balance, Ayur = Life): our new concept is based on the principles of Ayurveda and is a triad of WellFit-Active, WellFit-Spa and Food & Beverage. Ayurveda-oriented dishes for breakfast, lunch and dinner.
- Vegetarian dishes, whole foods, food combining options, gourmet plated meals, nutrition-conscious cuisine, lactose-free dishes.

EAT & DRINK

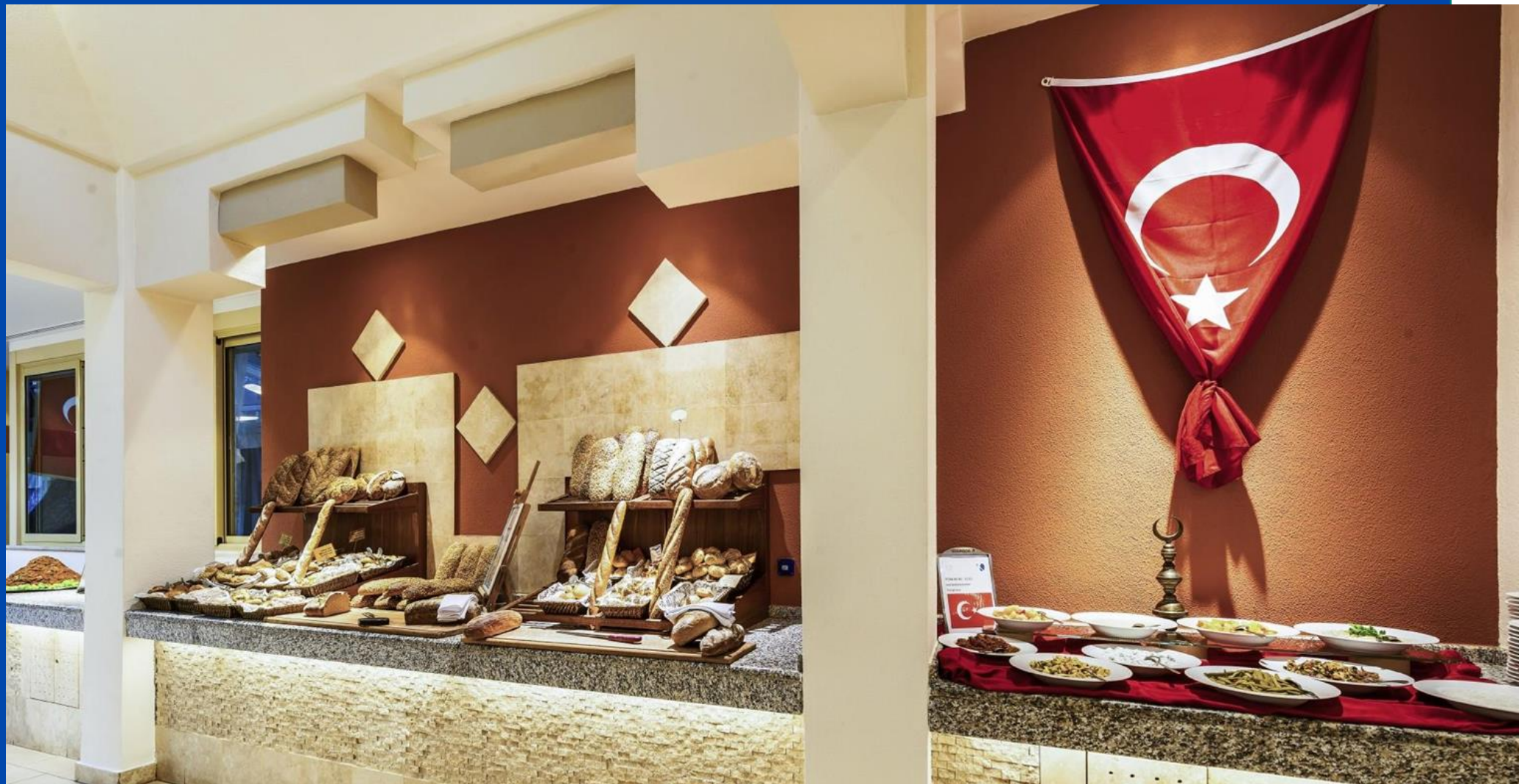
- 3 Restaurant
Main, Beach and Local speciality restaurant

Breakfast: 7:00 am - 11:00 am
Late breakfast: 11:00 am - 12:00 pm
Lunch: 12:30 pm - 2:00 pm
Bistro line: 12:30 pm - 5:00 pm
Dinner: 7:30 pm - 9:30 pm
Local speciality restaurant on selected evening reservation required

- All inclusive made by ROBINSON
- Varied buffets, international cuisine

4 Bars

Main bar: 10:00 am - 1:00 am
Beachbar: 11:00 am - 5:00 pm
Sports bar : 08:30 am - 12:30 pm & 3:30 pm - 6:00 pm
NITE CLUB: 01:00 am - 03:30 am



- LUHANA – Hawaiian living: diverse entertainment, colourful decoration, a Sundowner just like on Waikiki Beach and dinner buffets in a fiery setting: All this is our LUHANA day once a fortnight!
- tasteJAM: once a fortnight street food feeling with mobile stands for food & drinks with music
- Gala evening: a glamorous evening with culinary delicacies, exciting entertainment and selected cocktails! (once weekly)



BalAyur

BalAyur (Bal = Balance, Ayur = Life): our new concept is based on the principles of Ayurveda and is a triad of WellFit-Active, WellFit-Spa and Food & Beverage. Ayurveda-oriented dishes for breakfast, lunch and dinner.



ROBcarpet

**A glamorous evening
with culinary delights,
excellent
entertainment and
selected cocktails!
(once a week)**





High-quality entertainment at ROBINSON ÇAMYUVA



White Night, Party time at ROBINSON ÇAMYUVA



REMEMBER GREAT MOMENTS ROBINSON ÇAMYUVA

ROBINSON 

Share the moment



Welcome to ROBINSON SARIGERME PARK

YOUR RESORT AT A GLANCE



FOR
ALL

Sarıgerme. Dalaman . Türkiye

Couples . Singles . Honeymooners .
Water Sports

Open during the summer season

308 rooms

284.000 m²

Distance to Dalaman Airport, 20 km.



Located on a hill, it offers dreamy views of the wide sandy bay and islands.

Fine Sandy beach 500m

4 star hotel

4 restaurants , 4 bars

1 Outdoor swimming pool , 1 indoor pool

Souvenir shop, boutique, jewelry shop, hairdresser, mini market , WIFI in public areas and rooms included



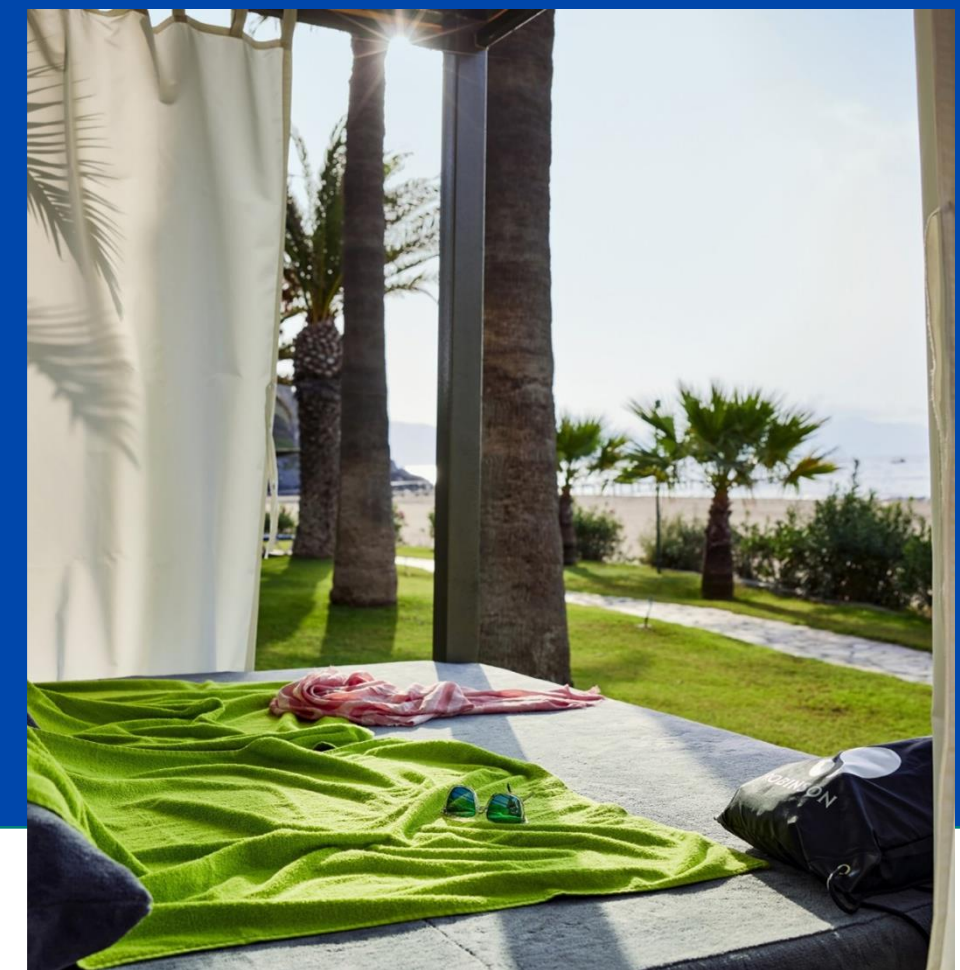
YOUR WARM WELCOME





Direct
Beach
Front

Fine
Sandy
beach



Wide sandy bay



Enjoy an amazing vacation



Daybeds in the garden (for a fee, reservation required)

POOLS

1 outdoor pool (not heated)



1 indoor freshwater pool (heatable)





Accommodation:
308 rooms, 8 categories,
Located in the
Mainbuilding,
Suits on the Hang of the
Hill



The beginning of a perfect day



Double Room Classic Seaside, with Small Balcony, 25-30 m²

Small balcony
1 bedroom and 1 bathroom
Double bed (two single beds pushed together 100x200cm)
put-up bed for the 3rd guest
Occupancy: min. 1 ADL, max. 3 ADL



Double Room Classic Seaside with Balcony, 25 -30 m²

balcony with sitting facility
1 bedroom and 1 bathroom
Double bed (two single beds pushed together 100x200cm)
put-up bed for the 3rd guest
Occupancy: min. 1 ADL, max. 3 ADL



Double Room Classic Seaside, no Balcony, 25 -30 m²

No balcony
1 bedroom and 1 bathroom
Double bed (two single beds pushed together 100x200cm)
put-up bed for the 3rd guest
Occupancy: min. 1 ADL, max. 3 ADL



Family Room Comfort (Park View), 46m²

- 2 balcony with sitting facility
- 2 double rooms with connecting door
- 2 bedrooms and 2 bathrooms
- Double beds (two single beds pushed together 100x200cm) in each room
- Occupancy: min. 2 adults and 1 child over 2 years, max. 3 adults and 1 child up to 17 years



Family Room Classic Seaside, 43 m²

- balcony with sitting facility
- 2 double rooms with connecting door
- 2 bedrooms and 2 bathrooms
- Double beds (two single beds pushed together 100x200cm) in each room
- Occupancy: min. 2 adults and 1 child over 2 years, max. 3 adults and 1 child up to 17 years



JSX1-Junior Suite Seaside, 43 m²

- balcony with sitting facility
- 1 bedroom and 1 living room, visually separated. and 2 bathrooms
- 1 King Size bed (200x200cm), Put-up bed for the 3rd guest (90x190cm)
- Occupancy: min. 2 adults, max. 3 adults
- in this room type the minibar gets refilled daily with soft drinks free of charge

All rooms in the mainbuilding were completely renovated in 2021.

Suite Sea View, 43m²



Located on A Hang. 200 m from the mainbuilding
balcony with sitting facility and jacuzzi

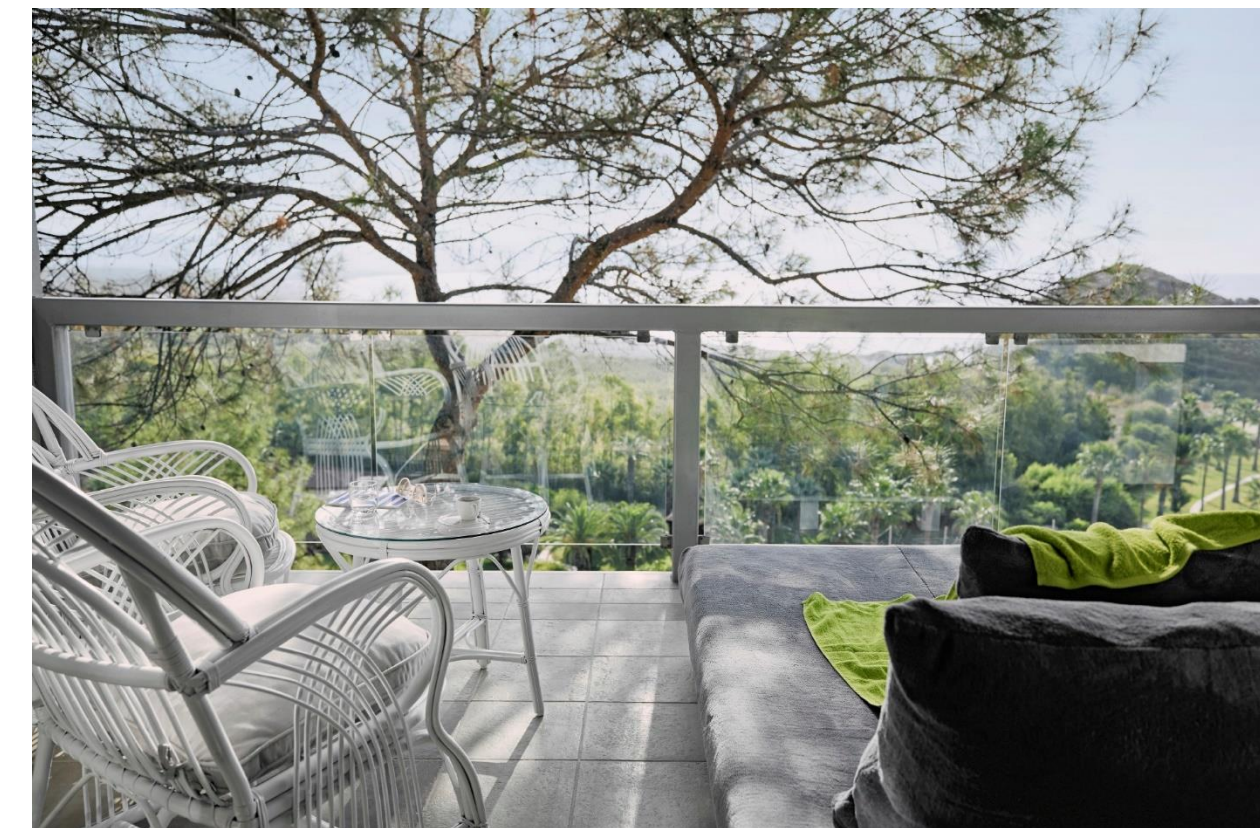
1 living room and 1 bedroom

1 King Size bed (200x200cm) and Put-up bed for the 3rd guest (90x190cm)

Occupancy: min. 2 adults, max. 3 adults

in this room type the minibar gets refilled daily with soft drinks free of charge
free shuttle service available between 8 am and 12 midnight

ROBINSON SARIGERME PARK



SPORT AND FITNESS

- . Beach volleyball, Football, Table tennis, Basketball, ROBS® sports (special sportive activities for young guest aged 3-15 during the main Holidays).
- . Archery
- . Tennis: 8 tennis courts (ash), tennis courts and HEAD racket rental free
- . Padel Tennis, 2 padel courts (artificial turf with quartz sand)
- . Catamaran, Windsurfing, Stand Up Paddling

Various trainings for children and adults,

Group fitness programs





8 tennis courts (ash)





Paddel Tennis





Biking tours - Outdoor activities





One of the best and most beautiful water sports regions in Türkiye





CATAMARAN SAILING

WINDSURFING



STAND-UP PADDLING



GROUP FITNESS

Experience group fitness - train your cardiovascular system, strengthen your muscles and enjoy a new body feeling that will allow you to live your life full of New energy.

Body Workout, (from 14 years)
deepWORK, (from 14 years)
Aqua Fit, 14 years and up
Indoor Cycling, (from 16 years)
HOT IRON, (from 16 years)
HIIT up!, (from 14 years)





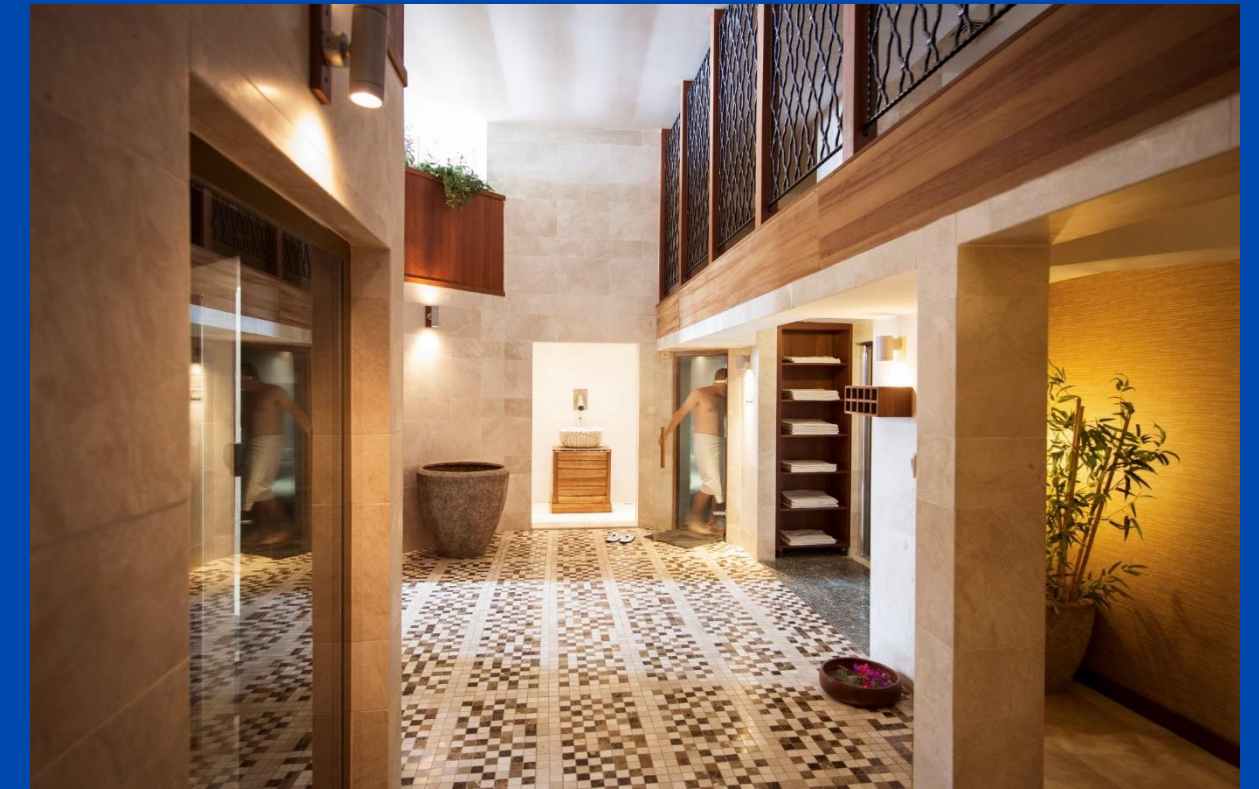
BODY & MIND

Take time for yourself and free your mind.

Discover your inner strength and relax. Do what is good for you and feel your own strength and flexibility

Yoga, pilates, slings in rhythm, Relax&Dream
(from age 14)



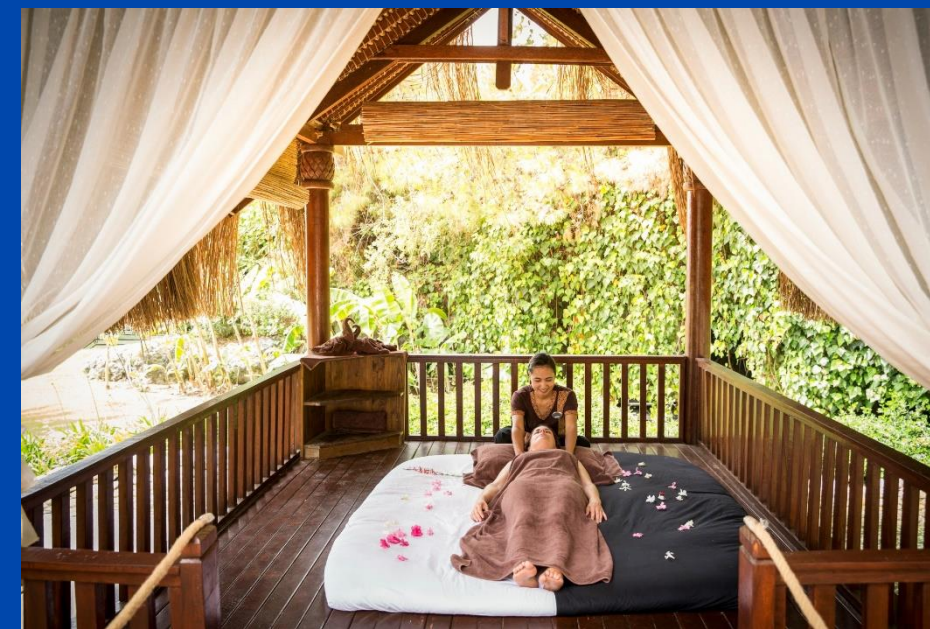


WellFit SPA

WellFit Spa (from 16 years)

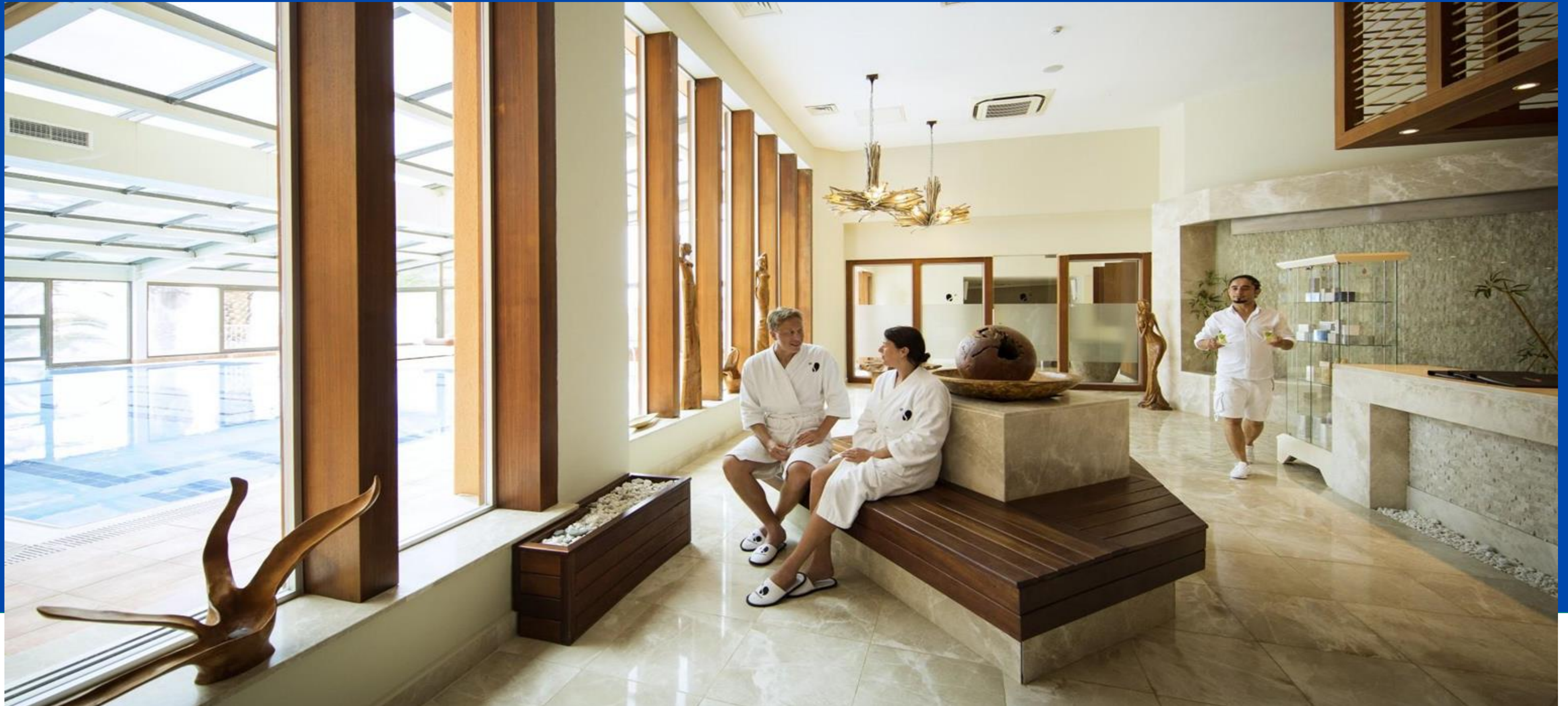
Finnish sauna, bio sauna, Sanarium, steam bath, Hamam, Relaxation area with water beds, relax pool, Massage Bali houses (indoor and outdoor) Massage and Beauty rooms

chargeable services:
WellFit®-Spa ,Classic cosmetic care, classic massage, Wellness-Massage, Ayurveda, hammam, hairdresser





Balinese massage lodge



WellFIT SPA with indoor pool





INDULGE YOURSELF

Eat and drink

3 Restaurants

Main restaurant with terrace

Local specialtie restaurant, Poolrestaurant

Beachrestaurant

Local speciality restaurant

selected evenings , (additional charge, reservation required)

4 Bars

Main bar, Pool bar, Lobby bar and NIGHTCLUB

All inclusive made by ROBINSON

Varied buffets, international cuisine Breakfast, appetizers, main dishes, desserts, salad

Late breakfast

Bistro line

Coffee specialty at breakfast (cafe latte, cappuccino, espresso etc.)

All drinks included, all day at the bar (excluding selected wines, sparkling wines and spirits) and soft drinks, beer, table wine, filter coffee and tea available in the buffet area

Coffee and cake in the afternoon

Gala evening once a week





Main restaurant with terrace

Open Buffet Breakfast - 07:30 - 11:00
Dinner 19:30 - 21:30

Terrace Area can be reserved with a paid bottle of wine



Pool restaurant

Open Buffet Lunch 12:30 - 14:30



Beach restaurant

Lunch 12:30 - 14:30
BistroLine 14:30 - 17:00

Eat and drink

4 Bars

Main bar, Pool bar, Lobby bar and NITE CLUB

Main bar 10 am - 00:30 am

Pool bar Open from 9 am - 6 pm

Lobby bar 6:30 pm - 8:30 pm

NITE CLUB Open certain nights

Gala evening once a week



- **ROBcarpet**

Galanight Glamorous entertainment, gastronomic delights, and a selection of cocktails (once a week)

- **LUHANA**

Hawaiian lifestyle: diverse entertainment, colourful decoration, a Sundowner just like on Waikiki Beach and dinner buffets in a fiery setting: All this is our LUHANA day once a fortnight!

- **BalAyur**

Life in balance, our new concept BalAyur is based on the holistic health teachings of Ayurveda (Bal = balance, Ayur = life) Our goal: to bring your body, soul and consciousness into balance



BalAyur

BalAyur (Bal = Balance, Ayur = Life): our new concept is based on the principles of Ayurveda and is a triad of WellFit-Active, WellFit-Spa and Food & Beverage. Ayurveda-oriented dishes for breakfast, lunch and dinner.





YOUR CHILDREN IN SAFE HANDS



Kids & teens

ROBY CLUB (3-6 years)

At the ROBY CLUB, our young guests can make new friends, go on little adventures and play to their heart's content in a safe environment and with loving care from our Kids' ROBINS.

Hourly programmes between 10.00 am and 9.00 pm 6 days a week

Languages: German and English

R.O.B.Y (7-12 years)

Whether sporty, creative or playful — there is something for everyone in the R.O.B.Y. range. Fun is always at the forefront of all programmes.

Hourly programmes during the main school holiday periods

between 10.00 am and 9.00 pm 6 days a week

Languages: German and English

ROBS (13-17 years)

Kids and teens can take part in their favourite sport in all age groups (depending on the sport) or discover new sports and practise with trained professionals.

ROBY BABY EQUIPMENT (from 0 years)

A range of services for parents with infants from 0 years. It includes baby and supplementary sets as well as pushchairs.

As numbers are limited, reservations must be made

SarigermPark@robinson.com

ROBcarpet

**A glamorous evening
with culinary delights,
excellent
entertainment and
selected cocktails!
(once a week)**





ENTERTAINMENT INCLUDED

Spectacular performances in the theater or in different areas
Gastrotainment

Evenings Parties

Live Performances

Sunset drink



Nights of entertainment

ROBINSON  SARIGERME PARK



ENJOY YOUR DREAMS ROBINSON SARIGERME

ROBINSON 

Share the moment



Welcome to ROBINSON NOBILIS

YOUR RESORT
AT A GLANCE



Belek - Türkiye

Couples, Single,s Families, Golf, Sport, WellFit

All year round

404 rooms

850.000 m² (200.000m² hotel ground – 650.000m² golf course

Distance to Antalya airport, 40 km.



Nestled on a small river separating the resort grounds from the sandy beach, reachable via a bridge

Sandy and fine pepple beach

5 Star Golf Hotel

5 Restaurant , 5 Bar

4 Outdoor swimming pool , 1 indoor pool

Souvenir shop, boutique, jewelry shop, hairdresser, mini market , WIFI included in many public areas and in some rooms.



YOUR WARM WELCOME





Hotel Area, 200.000m²



18 hole own Golf course, 650.000m²



Direct
Beach
Front



Directly on a 20 km long shingle/sand beach



Sandy Beach and Daybeds



Golfclub house

POOLS

Main pool (outdoor)

Relaxation pool (for adults aged 16 and above)

sports swimming pool (outdoor)

Indoor pool with water slide

Children's pool with water slide (outdoor)

1 baby pool with sunshade/sail (outdoor)

1 baby pool (indoor)







Accommodation:

404 rooms

10 categories

**Located in the Village Area,
Mainbuilding and Directly on the
Golf Area**





Double Room Classic Village, 27-33m²

Village area, park side garden view
balcony or terrace (patio), with sitting facility
1 bedroom and 1 bathroom
1 Double bed (two single beds pushed together), Sofa bed (1.90 m x 0.90 m) for the 3rd guest
Occupancy: min. 1 ADL, max. 3 ADL



Double Room Classic Main Building, 27-33m²

Main building, pool or park side,
balcony with sitting facility
1 bedroom and 1 bathroom
1 Double bed (two single beds pushed together), Sofa bed (1.90 m x 0.90 m)
Occupancy: min. 1 ADL, max. 3 ADL



Double Room Classic Main Building Sea Side, 27m²

Main building, sea side,
balcony with sitting facility
1 bedroom and 1 bathroom
1 Double bed (two single beds pushed together)
Occupancy: min. 1 ADL, max. 2 ADL



**Family Room Comfort Village,
55 m²**

Village area, park side garden view
2 double rooms with connecting door
2 balcony or terrace (patio), with sitting facility
2 bedrooms and 2 bathrooms
2 Double bed (two single beds pushed together), Sofa bed (1.90 m x 0.90 m)
Occupancy: 2 adults and 1 child over 2 years, max. 4 adults and 2 children up to 17 years

water boiler and espresso machine in all rooms



**Family Room Comfort Main Building
55 m²**

Main building, park side garden view
2 double rooms with connecting door
2 balcony or terrace (patio), with sitting facility
2 bedrooms and 2 bathrooms
2 Double bed (two single beds pushed together), Sofa bed (1.90 m x 0.90 m)
Occupancy: 2 adults and 1 child over 2 years, max. 4 adults and 2 children up to 17 years



**Family Room Classic Main Building,
51 m²**

Main building
balcony and terrace (patio), with sitting facility
1 bedroom, 1 livingroom/bedroom and 1 bathroom
1 Double bed (two single beds pushed together), Sofa bed (1.90 m x 0.90 m)
Occupancy: min. 2 adults, max. 3 adults and 1 child up to 14 years

Villa Classic /Bungalow/Villa

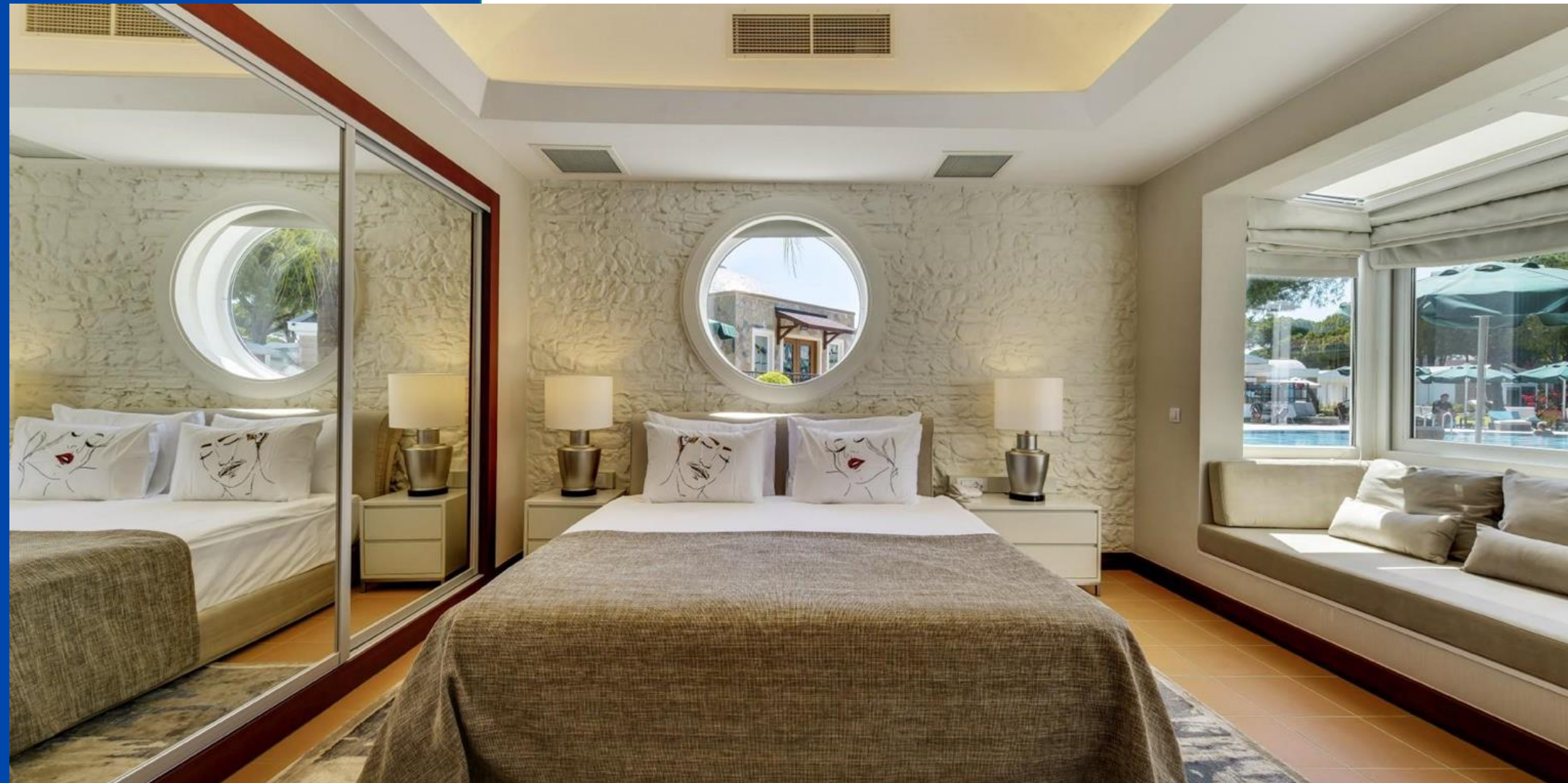
Located at the golf course area, Golf course view, 45 m²

Terrace: with sunbeds and seating

1 living room and 1 bedroom (separated visually by a sliding door) and 1 bathroom

1 king size bed (200x200cm), 1 put-up bed (90x180cm)

Occupancy: min. 2 adults, max. 3 adults and 1 infant



In this room category, we offer an additional on-site service: The **ROB Assistant**. Via WhatsApp on your cell phone, you can contact your personal ROB Assistant to, for example, book room service, reserve restaurant tables or book services such as massages. The ROB Assistant is also available around the clock for all questions and requests. Then the ROB Assistant will organise everything for you and send you a response.

Villa Comfort/Bungalow/Villa Superior

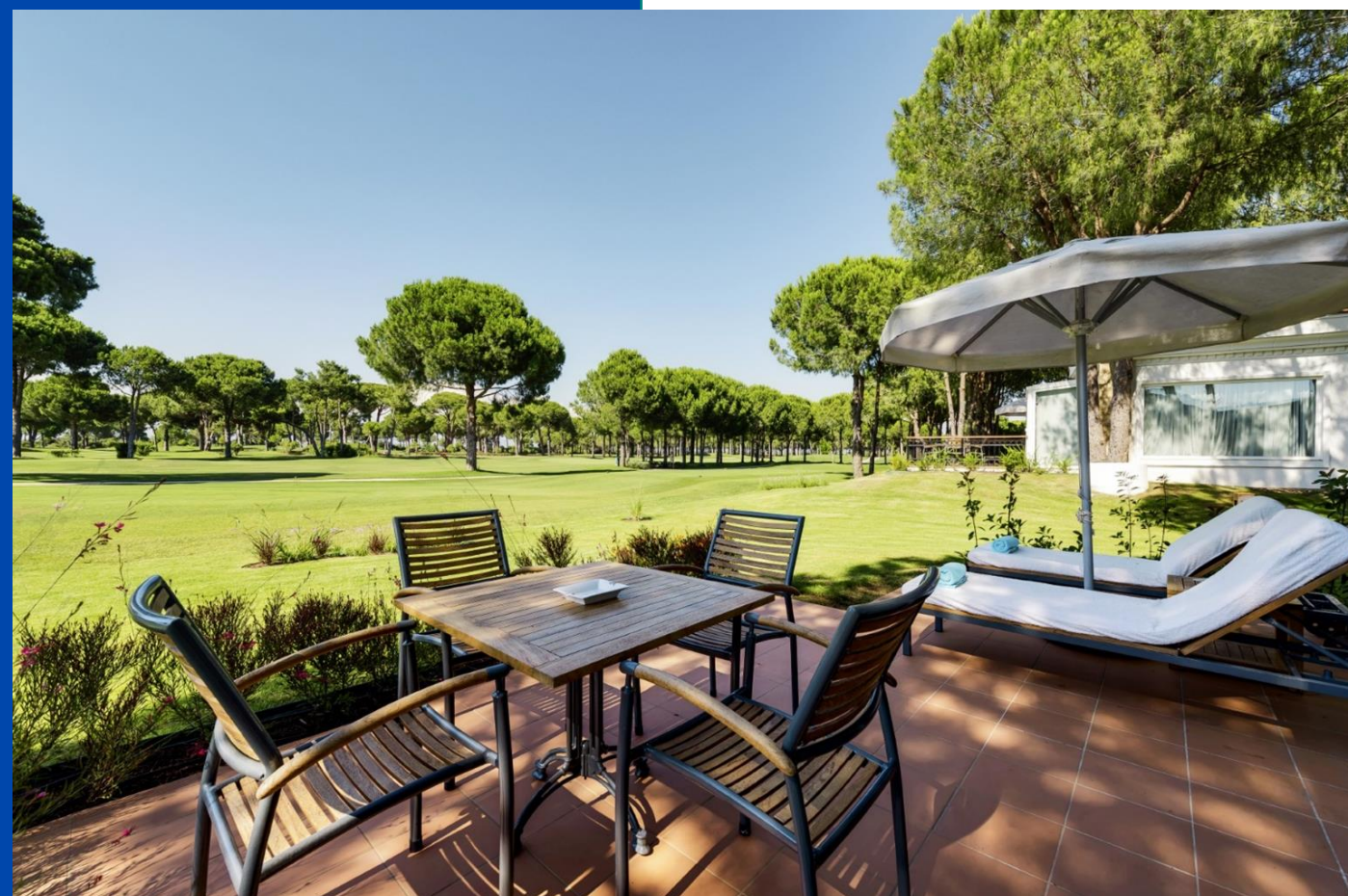
Located at the golf course area, Golf course view , 90 m²

Terrace: with sunbeds and seating

1 living room, 2 bedrooms and 2 bathrooms

1 Bedroom with king size bed (200x200cm), second Bedroom with 2 single beds. Put-up bed (90x180cm) (90x180cm)

Occupancy: min. 3 adults, max. 5 adults and 1 infant



In this room category, we offer an additional on-site service: The **ROB Assistant**. Via WhatsApp on your cell phone, you can contact your personal ROB Assistant to, for example, book room service, reserve restaurant tables or book services such as massages. The ROB Assistant is also available around the clock for all questions and requests. Then the ROB Assistant will organise everything for you and send you a response.

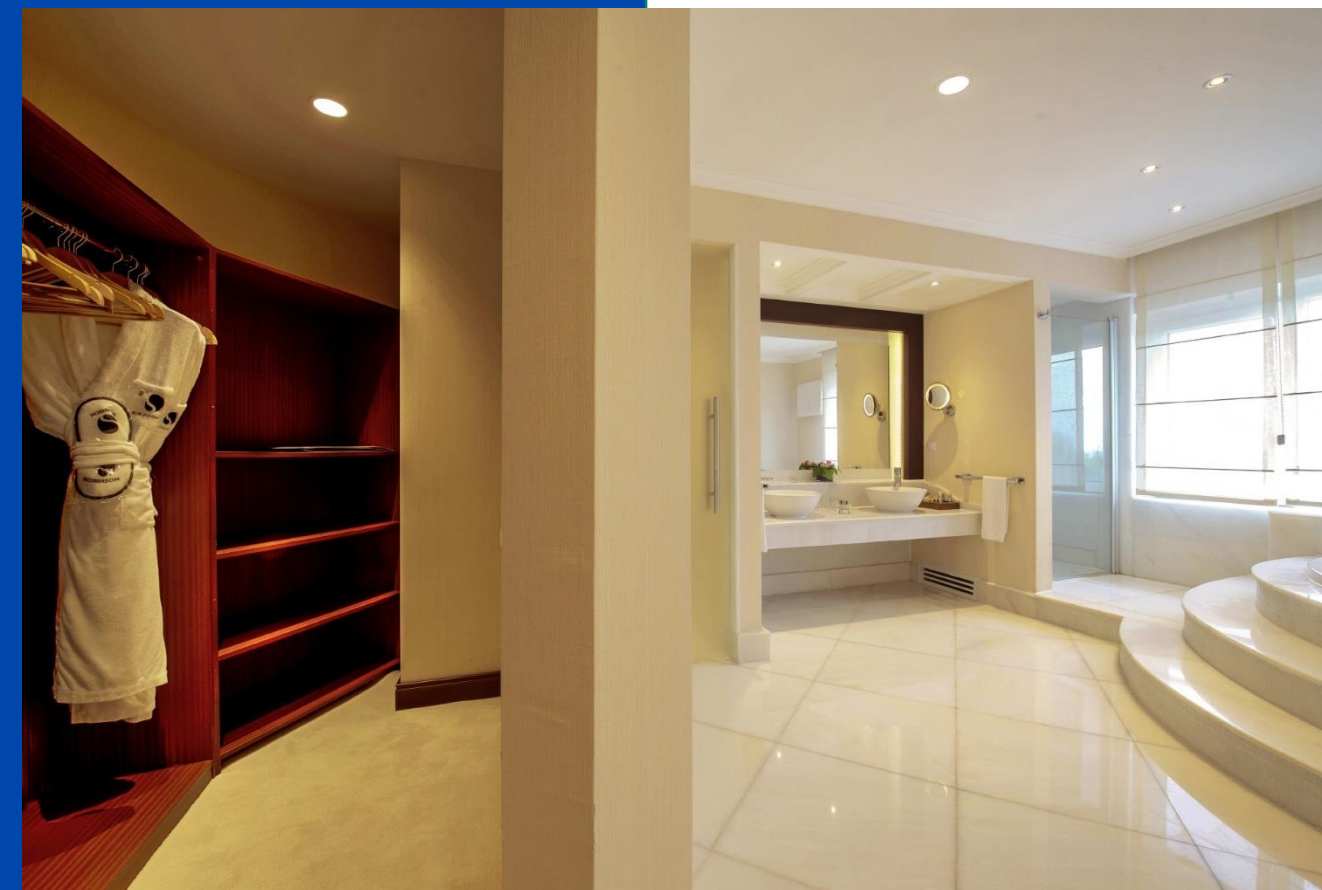
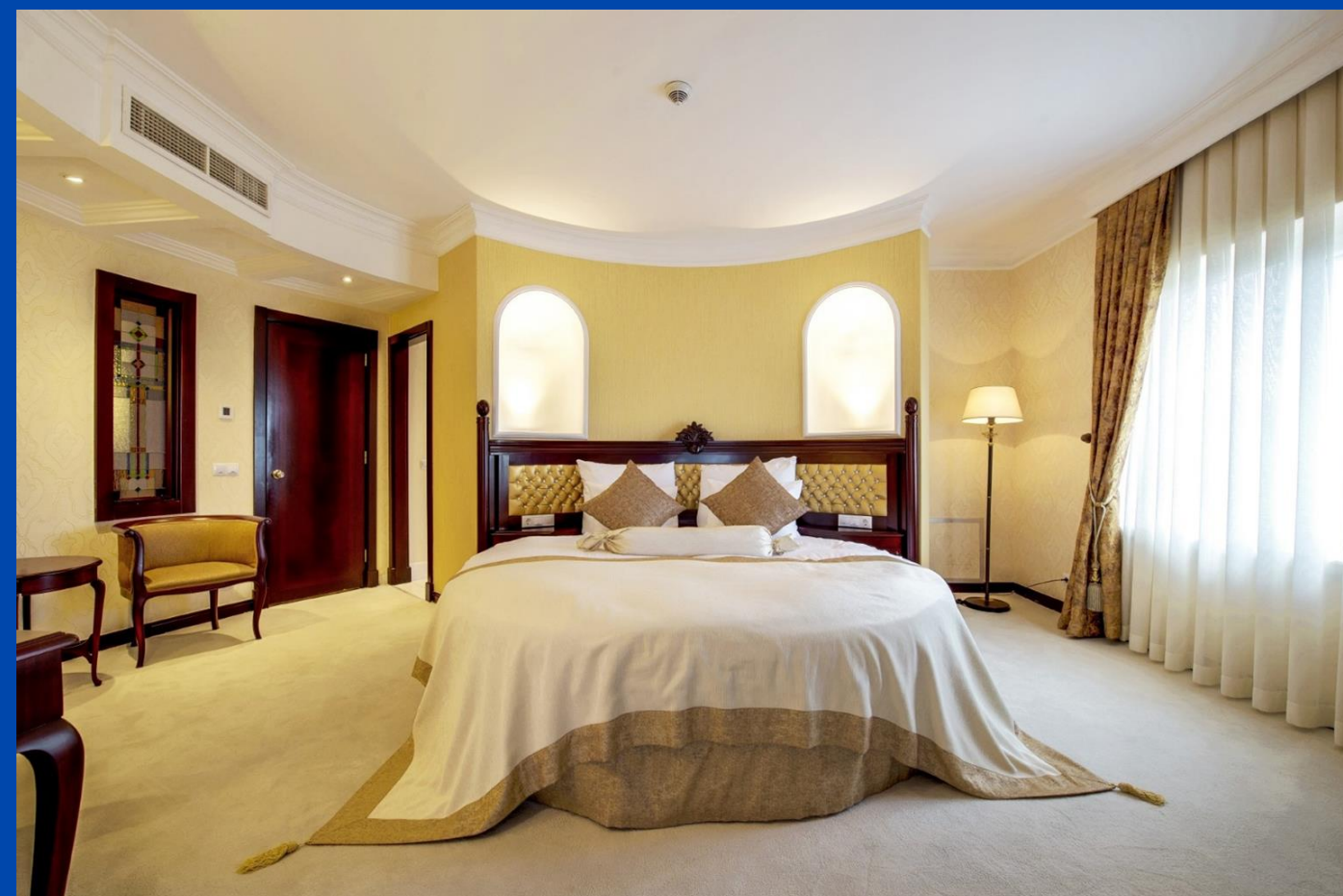
Suite Sea Side /King-Suite

main building, sea side, 110m²

Terrace: Roof terrace with sunbeds and seating
1 living room, 2 bedrooms and 2 bathrooms

1 double bed (single beds pushed together, each 100x200 cm), 1 King Size bed (round, ø 200 cm), 1 put-up bed (90x180 cm),

Occupancy: min. 3 adults, max. 4 adults and 1 child up to 14 years



In this room category, we offer an additional on-site service: The **ROB Assistant**. Via WhatsApp on your cell phone, you can contact your personal ROB Assistant to, for example, book room service, reserve restaurant tables or book services such as massages. The ROB Assistant is also available around the clock for all questions and requests. Then the ROB Assistant will organise everything for you and send you a response.

ROBINSON  NOBILIS

Presidential Suite Sea Side

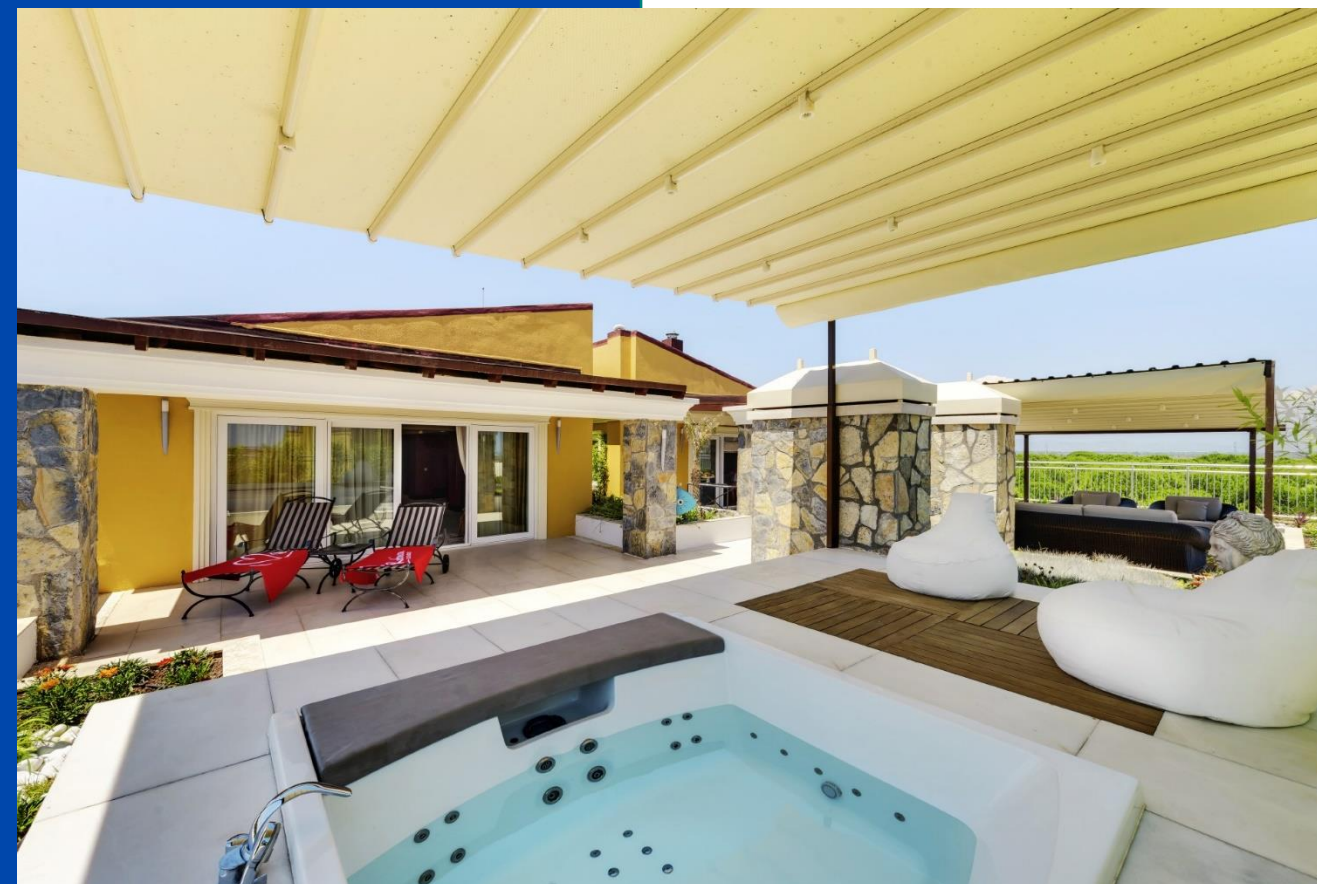
main building, sea side, seaview, 220m²

Terrace: Roof terrace with sunbeds, seating and whirlpool

1 living room, 3 bedrooms and 3 bathrooms

1 Bedroom with king size bed (200x200cm), other Bedrooms with 2 single beds

Occupancy: min. 2 adults, max. 6 adults



In this room category, we offer an additional on-site service: The **ROB Assistant**. Via WhatsApp on your cell phone, you can contact your personal ROB Assistant to, for example, book room service, reserve restaurant tables or book services such as massages. The ROB Assistant is also available around the clock for all questions and requests. Then the ROB Assistant will organise everything for you and send you a response.

SPORT AND FITNESS

- Ball sports, Beach volleyball, Water sports, WellFit, Sporttainment programmes especially for young people 13 - 15 years old
- Do you need a suitable match partner at your level? There are always plenty of suitable candidates to be found on our well-maintained courts. 6 tennis quartz sand courts, 3 of which are floodlit
2 grass tennis courts for an additional charge
- Catamaran
- Ideal for beginners and advanced archers
Archery range up to 70 m
- Pilates, Yoga, Fitness studio, Indoor cycling, Personal Training, Power plate studio, Aqua cycling, Indoor swimming pool, Group fitness





Tennis / 6 silica-sand courts and 2 grass courts



Water sports







GROUPFITNESS

experience group dynamics, train your cardiovascular system, strengthen your muscles and enjoy a new physical awareness that will give you the energy to live life to the fullest.

- . Strengthening (e.g. body styling), from 14 years
- . Endurance/choreo (e.g. dance), from 14 years
- . Aqua fit, from 14 years
- . Indoor cycling, from 16 years
- . Hot iron, from 16 years
- . Functional training, from 14 years
- . XCO shape/xco walking, from 14 years
- . Slings athletic/trx, from 14 years
- . Nordic walking, from 14 years
- . Aqua cycling (strength and endurance training that is easy on the joints), from 14 years
- . Boxing, from 14 years



GOLF / 18 hole Golfcourse



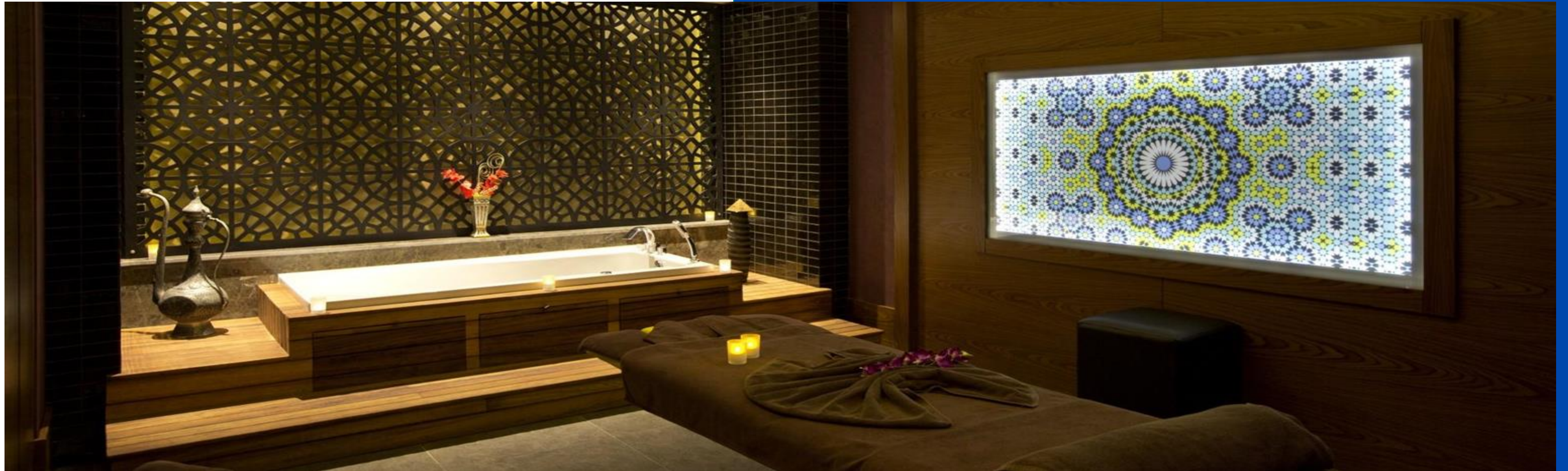


BODY & MIND

Discover your core strength and unwind – do what's good for you and feel your own strength and flexibility. I take time for myself and let my thoughts run free.

Pilates, from 14 years
Yoga, from 14 years
Slings in rhythm, from 14 years
Relax&Dream, from 14 years





WellFIT SPA

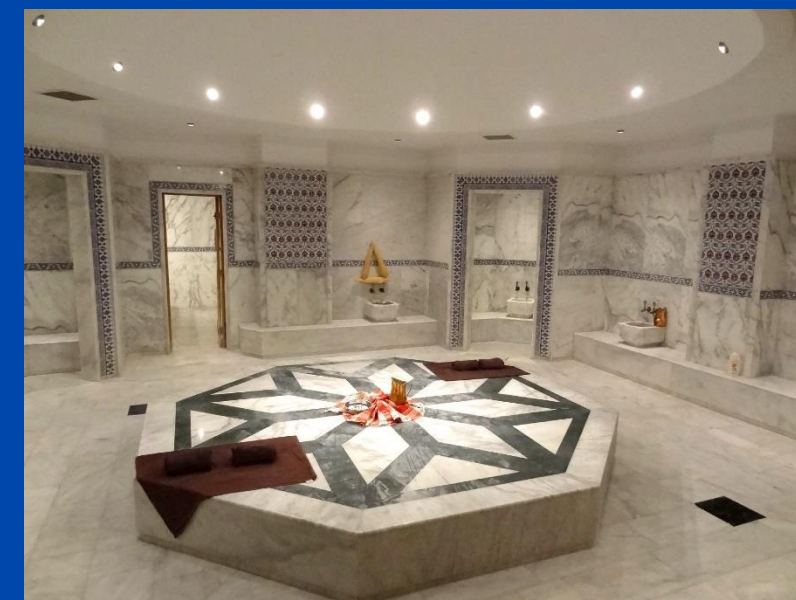
Enjoy peace and quiet and let yourself be spoiled. Whether during a massage or beauty treatment, in the sanarium, during a sauna infusion or in the hamam - I treat myself to this wellness time-out.

Additionally charged treatments:

Standard cosmetics treatment

Standard massage, Wellness massage

Ayurveda, Hamam









MOMENTS OF INDULGENCE

Eat and drink

- 5 Restaurant

Mainrestaurant , 2speciality, Golf Clubhouse, Beach Restaurant, Suchi Lounge

Breakfast: 7:30 am - 10:00 am

Late breakfast: 10:00 am - 11:00 am

Lunch: 12:30 pm - 2:00 pm

Bistro line: 1:00 pm - 5:00 pm

Dinner: 7:30 pm - 9:30 pm

Children's restaurant 12:00 am - 12:30 pm and 6:00 pm - 6:30 pm

Local speciality restaurant Open certain evenings

Gourmet restaurant Open certain evenings

Beach restaurant Open certain evenings

Golf Clubhouse Open certain evenings

- All inclusive made by ROBINSON

- Varied buffets, international cuisine

- Late breakfast

- Vegetarian dishes, whole foods, food combining options, gourmet plated meals, nutrition-conscious cuisine, lactose-free dishes.





Wine Terrace – Main Restaurant

Eat and drink

- 5 Bar

LOBBY BAR: OPEN 24 HOURS

POOL BAR: OPEN FROM 10:00 AM - 1:00 AM

BEACH BAR: OPEN FROM 10:00 AM - 6:30 PM

BIGA BAR: OPEN FROM 8:00 AM - 6:00 PM (GOLF CLUB - EXTRA CHARGE)

NITE CLUB: DAILY FROM MIDNIGHT - 2:00 AM





Sushi Lounge



 YOUR CHILDREN IN SAFE HANDS



Children and teenagers

ROBY CLUB (3 - 6 years)

Hourly programmes between 10am and 9am
6 days a week

R.O.B.Y. (7 - 12 years)

Hourly programmes in the main school
holiday periods between 10am and 9pm 6
days a week

ROBS (13 - 17 years)

Hourly programmes in the main school
holiday periods 6 days a week

ROBY BABY EQUIPMENT (from 0 years)

A range of services for parents with infants
from 0 years. It includes baby and
supplementary sets as well as pushchairs.
As numbers are limited, reservations must be
made SarigermePark@robinson.com



- LUHANA – Hawaiian living: diverse entertainment, colourful decoration, a Sundowner just like on Waikiki Beach and dinner buffets in a fiery setting: All this is our LUHANA day once a fortnight!
- tasteJAM: once a fortnight street food feeling with mobile stands for food & drinks with music
- Gala evening: a glamorous evening with culinary delicacies, exciting entertainment and selected cocktails! (once weekly)



BalAyur

BalAyur (Bal = Balance, Ayur = Life): our new concept is based on the principles of Ayurveda and is a triad of WellFit-Active, WellFit-Spa and Food & Beverage. Ayurveda-oriented dishes for breakfast, lunch and dinner.





ENTERTAINMENT INCLUDED

Staged gastrotainment evenings

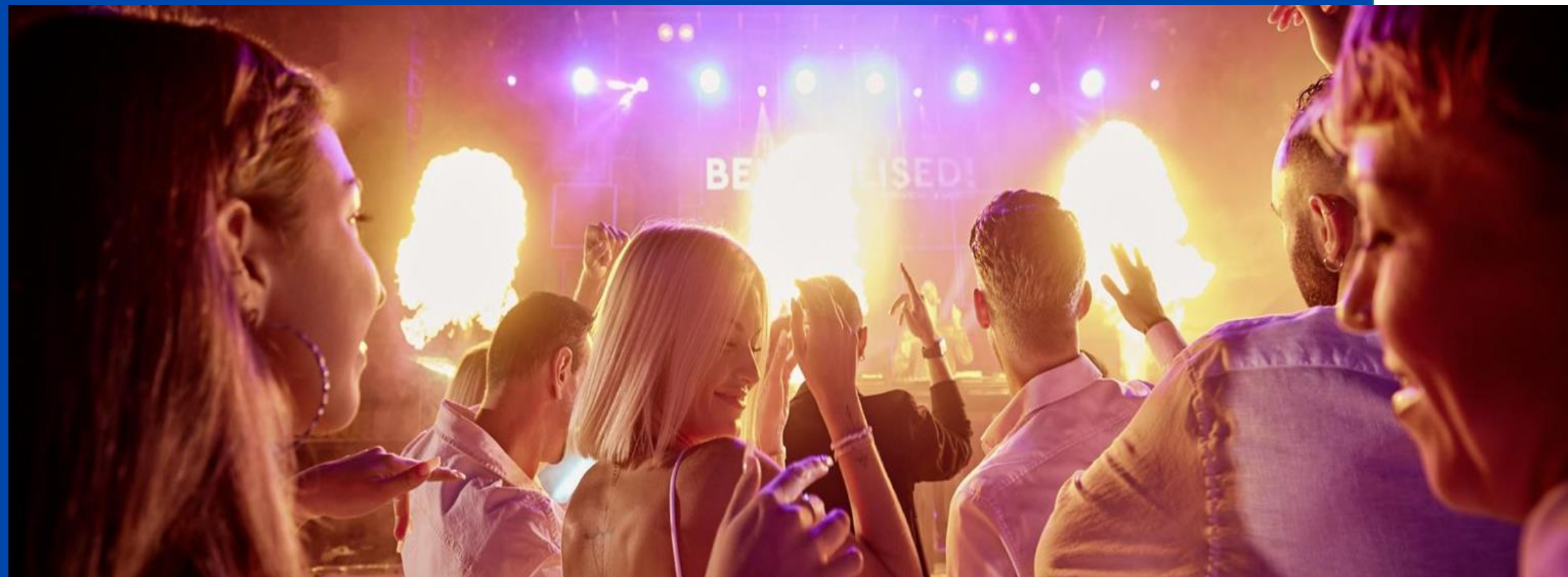
Sundowner

Motto Parties, Barlife and Dance

Live music and live performances

Evening shows in the theatre

“Meet & Greet” meeting point for solo travellers





Entertainment evenings, Parties.

ROBcarpet

**A glamorous evening
with culinary delights,
excellent
entertainment and
selected cocktails!
(once a week)**



INCENTIVES & MEETINGS

Conference center "Forum":
Conference hall up to 450 seats,
banquet hall up to 250 seats for
dinner, cocktail lounge, internet
access, WIFI



5 conference rooms
(up to 60 people)



ROBINSON NOBILIS EXPERIENCE HOLIDAY

ROBINSON 

Share the moment

БЛАГОДАРИМ ЗА ВНИМАНИЕ!



Ирина Колышкина
Руководитель направления

+7 495 99 58 999, 8 800 333 68 69
irina@spectrum.ru

Валерия Мильченко
Ведущий менеджер

+7 495 99 58 999, 8 800 333 68 69
lera@spectrum.ru

Ольга Львова
Key Account Manager ROBINSON hotels

ROBINSON@mmaconsulting.company